



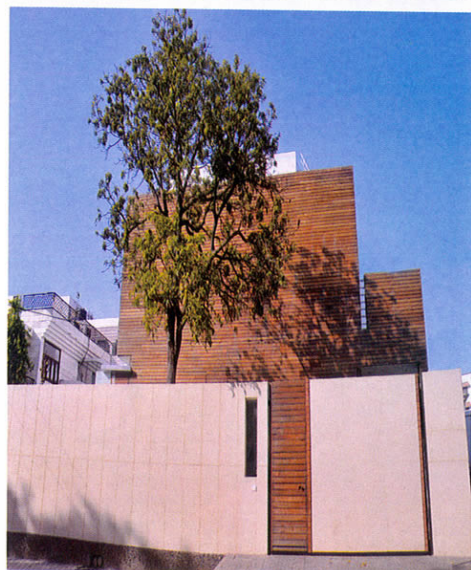
## Play of volumes



## INTERIOR

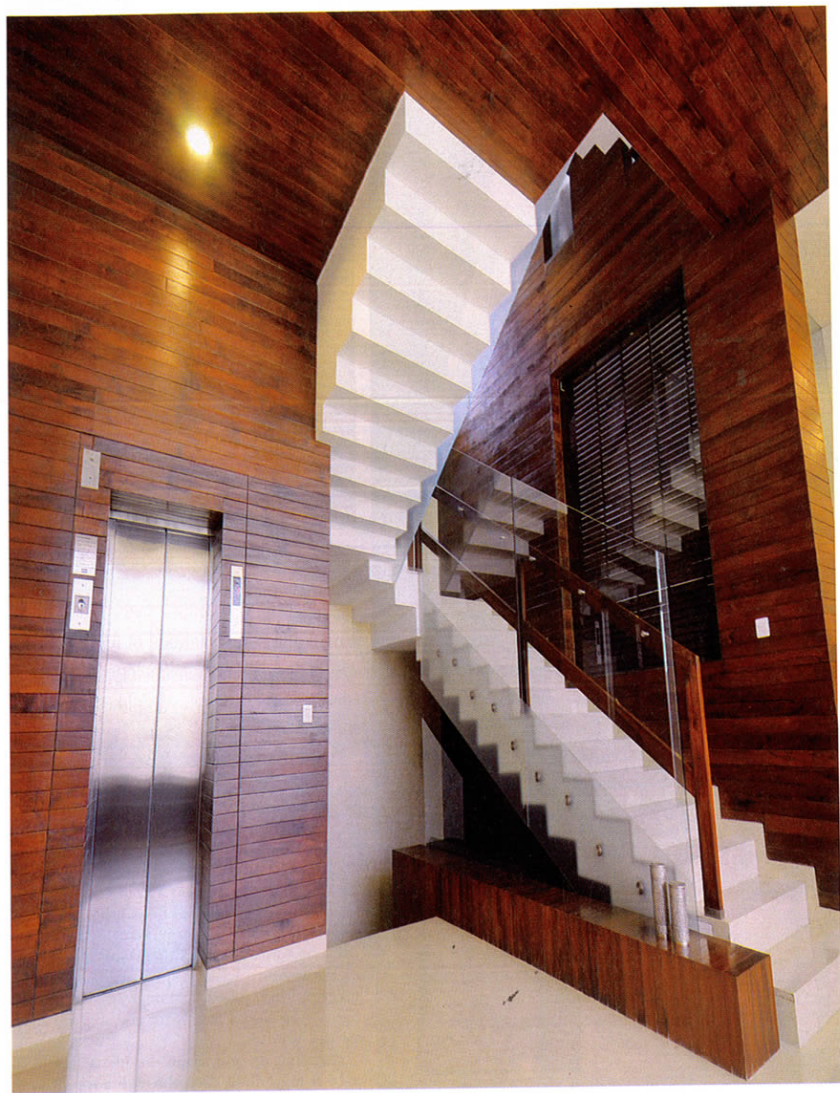
PHOTOGRAPHS: HUMAYAN KHAN

Architect Sourabh Gupta gives a tony residential neighbourhood of Agra a distinct skyline and vocabulary, with his design of a house with a bold wooden façade.



The house, with a 30 sq ft wooden facade and a perforated skin inside of white and glass, has a clean and contemporary look. An introverted layout with a central courtyard and a complex composition of spaces that flow into each other, unfold like a dramatic storyboard as one moves from one area into the other. Controlled light from the courtyard and a play of views through fenestrations placed strategically as north lights, top lights and structural glazing light up the interiors.

Ramping up and along the blank façade to a 16 ft high door, then through a top lit long



The double height entrance foyer has a floating glass bridge. Controlled light through fenestrations placed strategically as north lights, top lights and structural glazing brighten the interiors.

and narrow passage, one arrives into the double height entrance foyer with a floating glass bridge. Moving ahead, one comes to the family living and dining spaces that open onto a lush green courtyard. The formal entertainment spaces on one side and private sleeping zone on the other define and shade the courtyard.

A top level for servants and a basement for cars and services make the house vertically compact. The servant and service areas have their own separate access routes, so the house is insulated from unnecessary traffic.

The house is vertically compact, with the servant and service areas having their own separate access routes, so the main areas are insulated from unnecessary traffic.





## INTERIOR



The master bedroom suite is large with seating spaces on one side and a sleeping zone on the other, and a luxurious bathroom with a huge mirror enhancing the space.

No effort and expense seems to have been spared to give the residents a home that is the epitome of luxury and functionality...Italian designer furniture and lighting, American security and lighting systems, German doors, windows and kitchenettes and state-of-the-art equipment...

The meditation room is quiet and independent with a 25 ft height, the family master suites have their own terraces, the multipurpose spaces are large and flexible and an incredible play of light and height (read shade and volume) adds to the spatial richness. **ib**

### FACT FILE

Architect: Sourabh Gupta  
 Archohm Consultants Pvt Ltd  
 Project: Agra House  
 Covered area: 1,000 sq mts  
 Project Cost: ₹ 400 lakhs  
 Completion period: 2 years and 4 months

