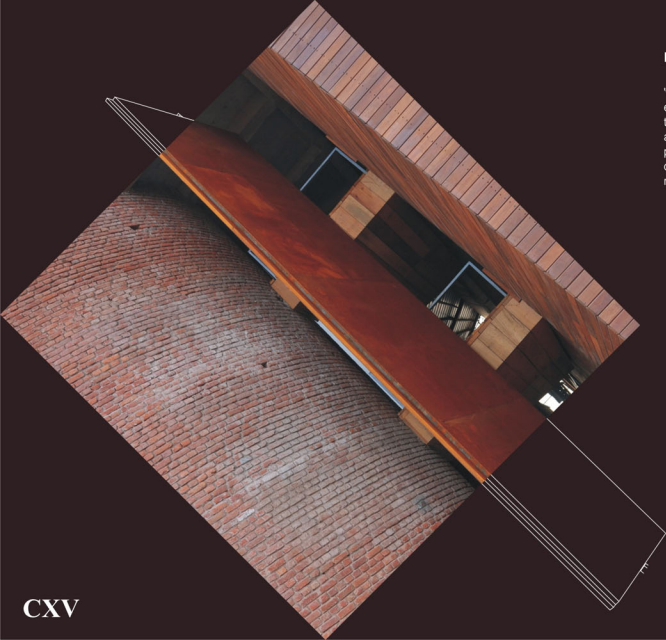




## mad and fun

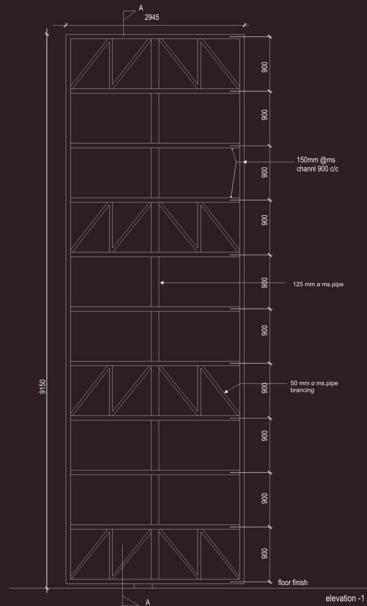
the two simple words that epitomize our attitude and aptitude. one needs to move beyond the basic premise of solving a functional problem with an aesthetic solution. the idea is to go beyond, stretch boundaries and explore possibilities as a journey that brings a smile on every mile.

CXIII



## mad iron door

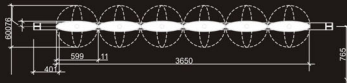
'wow'. a single piece of corten steel main entry door that opens into the atrium view of the floating glass meeting rooms. this door is a single piece that defines the archohm philosophy of 'mad and fun'. a clear over layer on a functional obligation of controlling movement.





### news fins

this is an exaggerated external version of the newsletter. this galvanized version of our monthly magazine directs the visitors towards the entry door.



### green gate

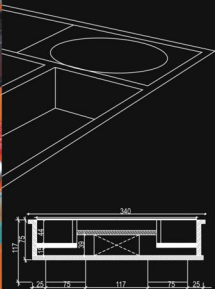
a screen of green creepers climbing a mesh - a screen to the electrical substation, it moves with the plants and the base as and when required. this is one of the many variants of steel structures exploring the campus.



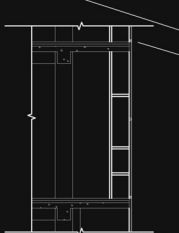


## tray station

as a take on using the old existing furniture yet improving on its nuances, this was a functional unit that was archohm-centric in its adaptations. This tray helps in relieving the table of water bottles, power and light bases, mobile phones, stationery, a pile of papers and a telephone. a 48 inches by 15 inches by 2 inches piece of wood, corian and aluminum, this organiser of sorts attempts to de-clutter a four - workstation unit and renders a bright colour to the space.



section dd



typical section

## fore store

the façade of the building has been designed as a hundred feet long and thirty feet high cupboard. this is a double layer of glass with the entire storage of the office within it. the aluminium structure, usually the structural glazing is designed as a double truss so as to accommodate a modular storage. stationery, books, files, folders, boxes, models and samples are all a part of this façade. from a wc piece to light fixture, an Italian catalogue to a drawing cabinet, the façade is a true reflection of work at archohm.

the idea of a cupboard brought in the required insulation from heat and barrier for light. one saw a collage of materials that is color coded and organized with the help of stationery modules designed per faculty in terms of brown architecture, orange interiors, yellow electrical, blue plumbing, red documents and so on. the human stickers bring in the fresh sun and a sense of scale to the entire frame.

a simple demonstration of archohm work life inside out.

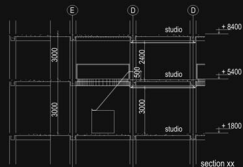


## light pole

not for heavy weights, but it's a slide for a quick vertical drop on a bean bag. the double height pole doubles as an experiment platform to light fittings from the various arms extending to facilitate the ohms laws of archohm. a gesture of connect that is more spirited than intended.

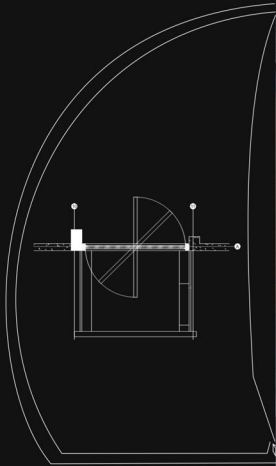


CXXXIII



## stainless slide

this is a super functional unit that spares documents and products from being thrown down to the secretarial of the office from the upper floors. this dynamic and visually loud form completes the backdrop to the reception following the 'form follows function' rules of the book.



### circular door

the 'circle' of opening warranted uninterrupted circular glass, framed in thick wood and embedded in a thick wooden frame, this circular door concludes the pivot experimentation at studio archohm.



### round railing

the large full circular stainless steel and wooden railing strategically hides view, lets light in, directs focus to the garden and forms the vertex of the logo on the large bare concrete façade.

